



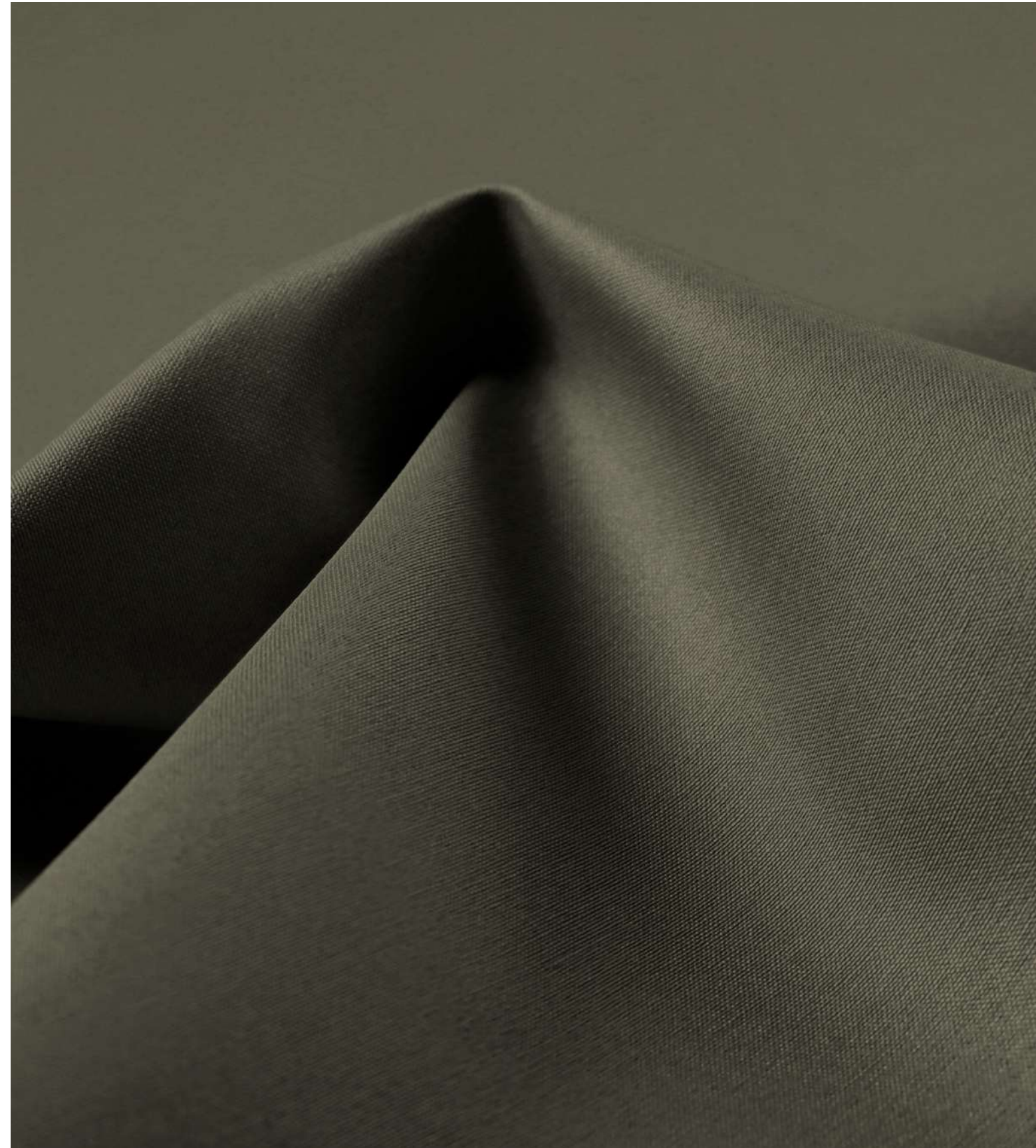
**THIEME**  
*Objekteinrichtungen*



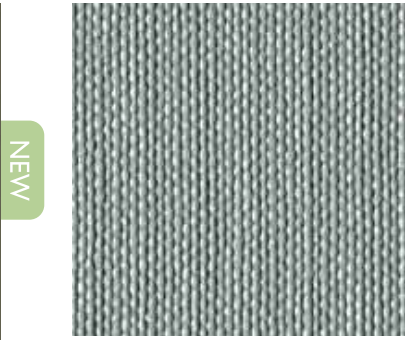
# Silvertex®



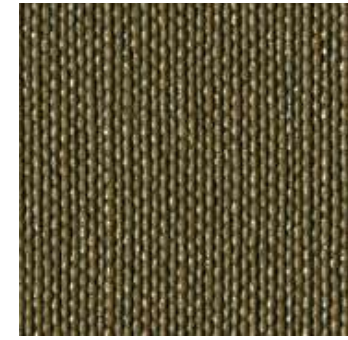
**KATALOG**



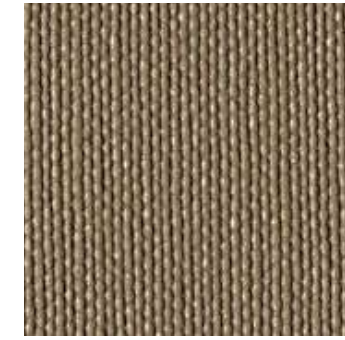
122-5444  
JUNGLE



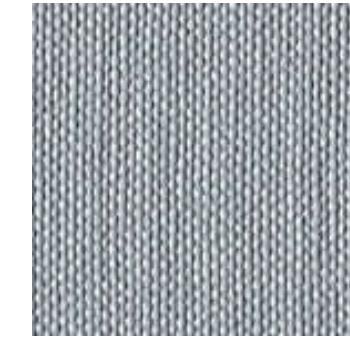
122-6434  
MIZZLE



122-5468  
HUNTER



122-5009  
SAGE



122-2089  
WHITE



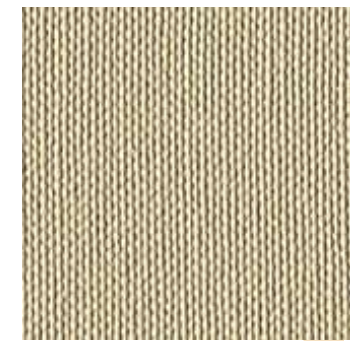
122-4004  
ICE



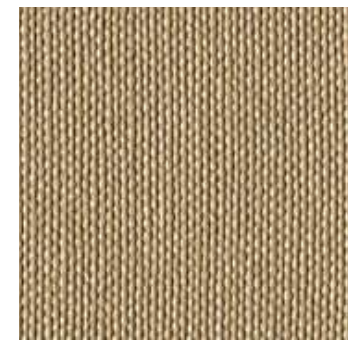
122-2090  
ICE CREAM



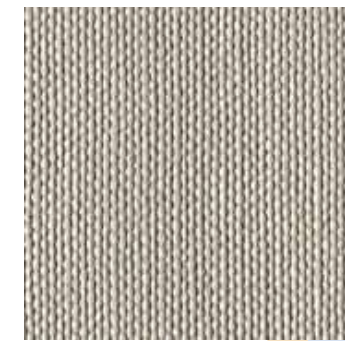
122-1077  
CREAM



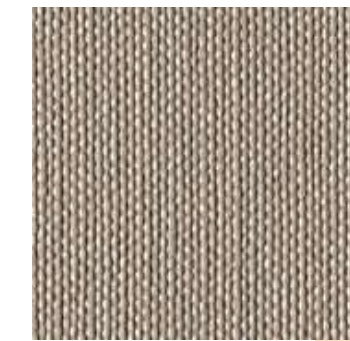
122-1051  
SISAL



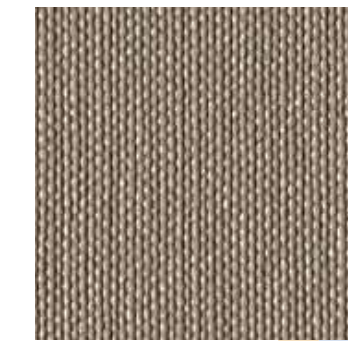
122-1078  
CHAMPAGNE



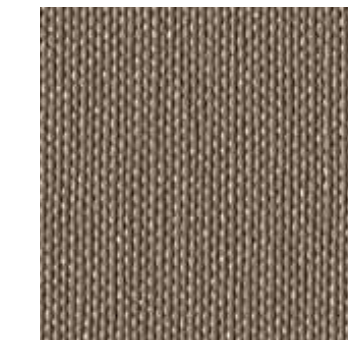
122-0001  
MACADAMIA



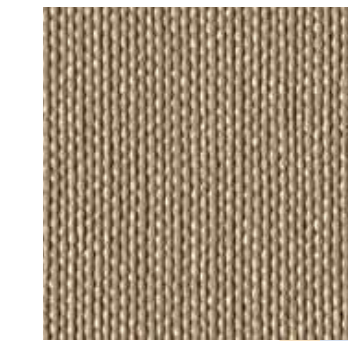
122-0002  
SANDSTONE



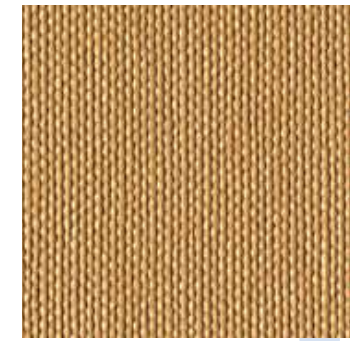
122-0009  
TAUPE



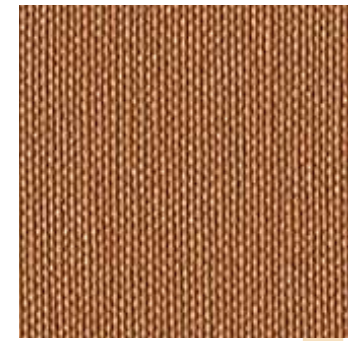
122-4012  
SHIITAKE



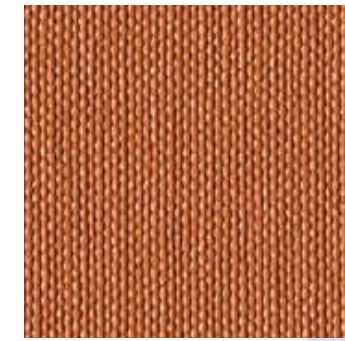
122-1010  
BEIGE



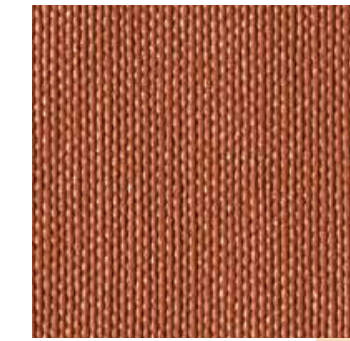
122-2105  
CAMEL



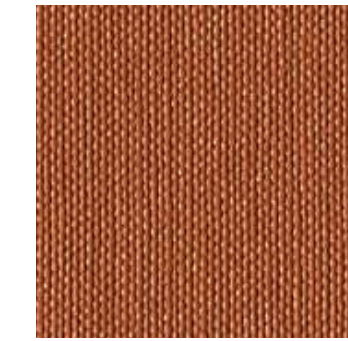
122-2003  
COBRE



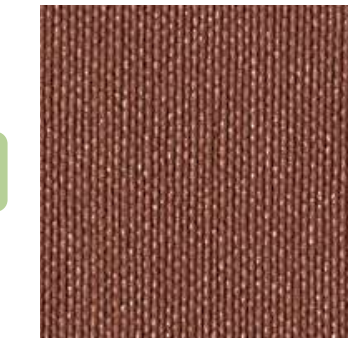
122-0013  
ORANGE



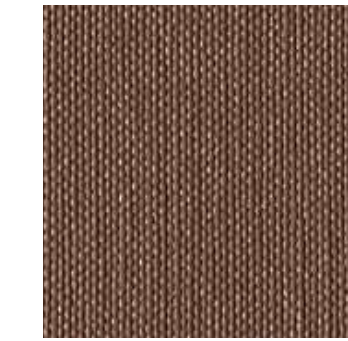
122-6061  
MANDARIN



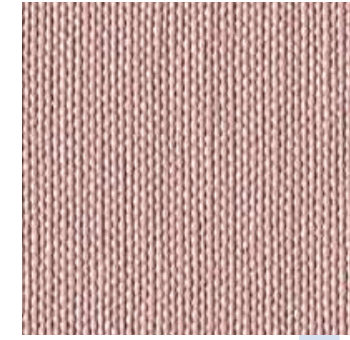
122-9243  
BRICK



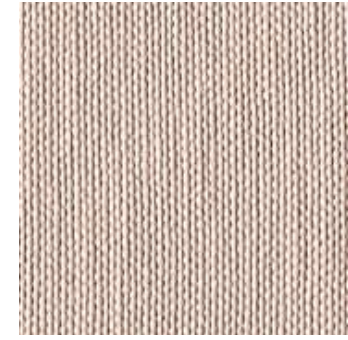
122-1014  
UMBER



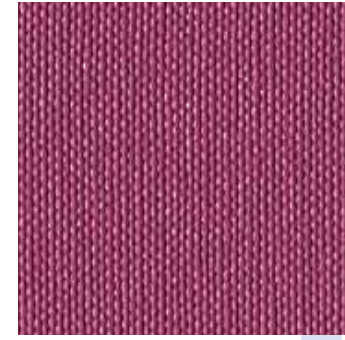
122-0073  
LUGGAGE



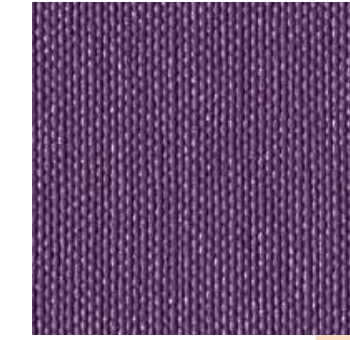
122-2098  
ROSÉ



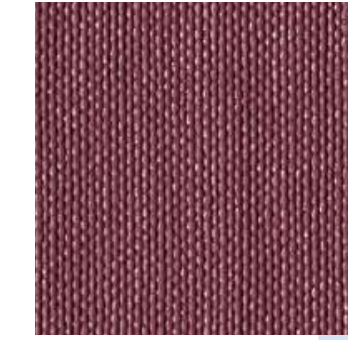
122-2099  
LOTUS



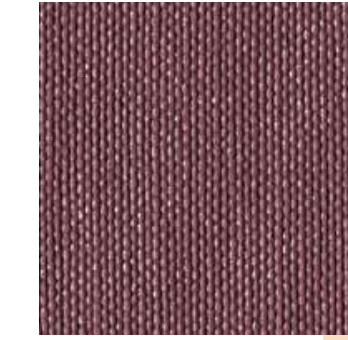
122-2097  
ORCHID



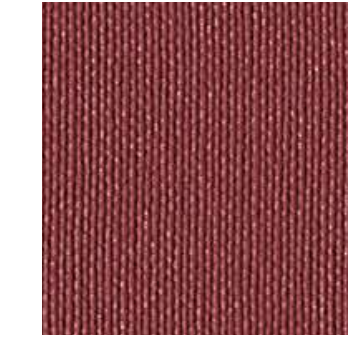
122-7001  
AUBERGINE



122-2016  
RASPBERRY



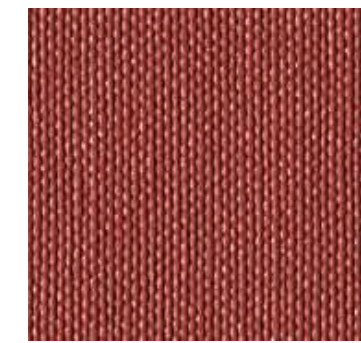
122-6004  
RUBIN



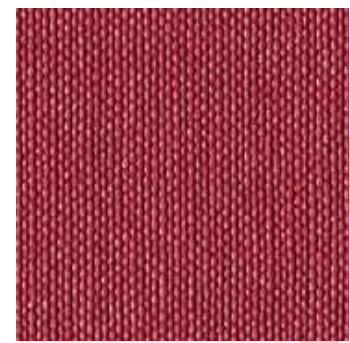
122-2064  
WINE

# Colour Palette

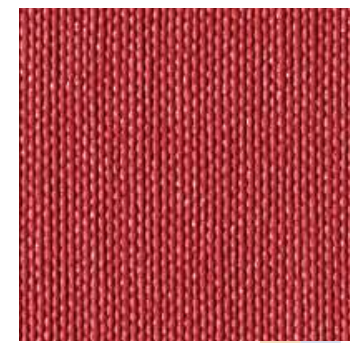
66 inspiring colours



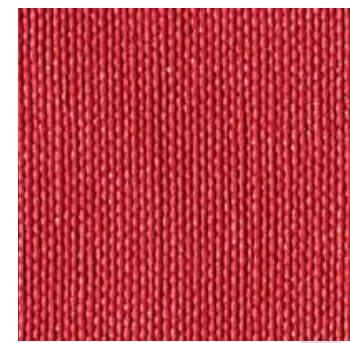
122-2012  
SUNKIST



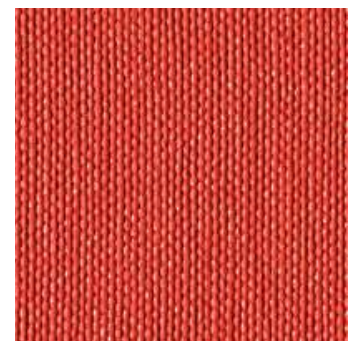
122-7251  
GOJI



122-2011  
RED



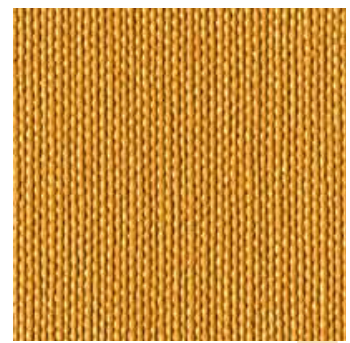
122-2095  
GRENADINE



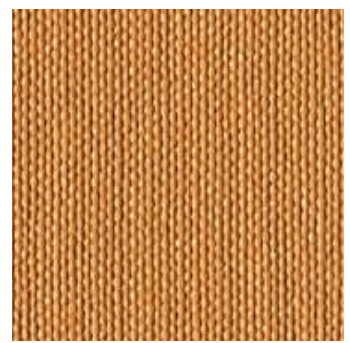
122-2096  
TOMATO



122-2093  
SQUASH



122-6065  
SAFRAN



122-6062  
MELON



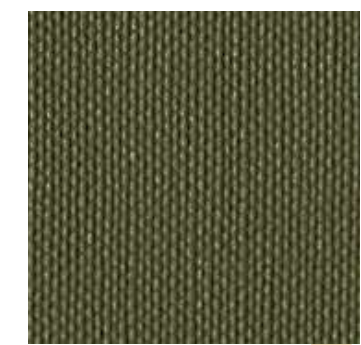
122-2092  
AVOCADO



122-5008  
PISTACHO



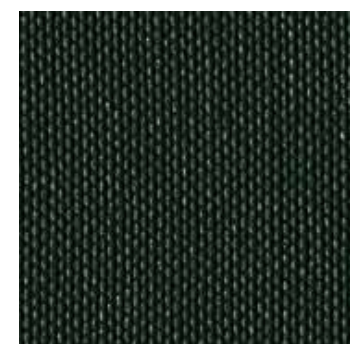
122-5019  
CELERY



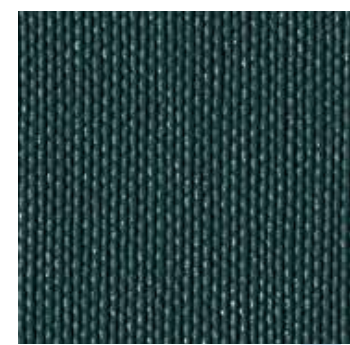
122-5020  
BASIL



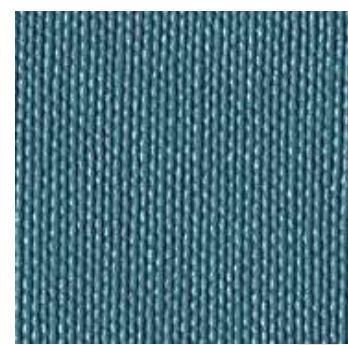
122-5010  
BOTTLE



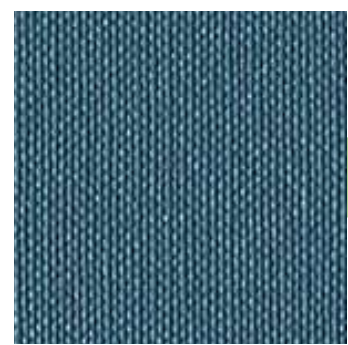
122-5063  
FOREST



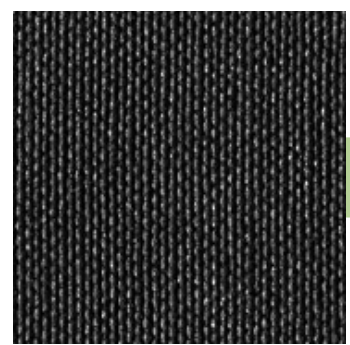
122-2100  
TEAL



122-3001  
TURQUOISE



122-3352  
DEESEA



122-3375  
WHALE



122-3068  
JET



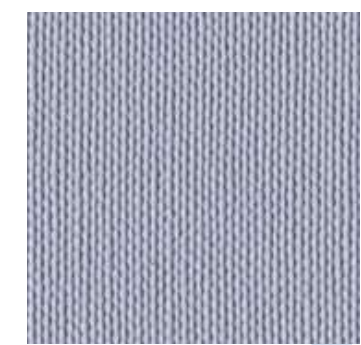
122-3007  
SAPPHIRE



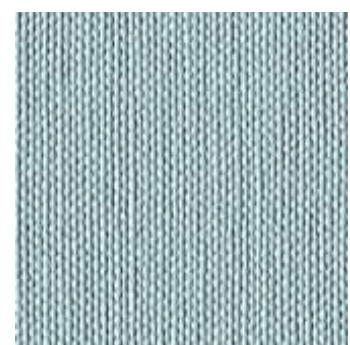
122-3067  
DELFT



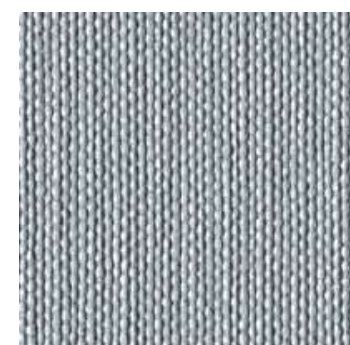
122-3066  
BALTIC



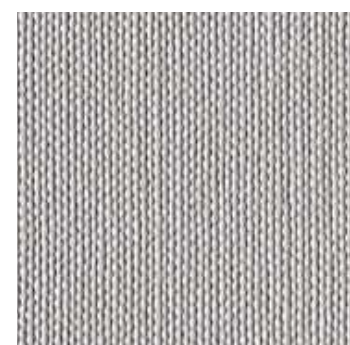
122-2103  
SKYLIGHT



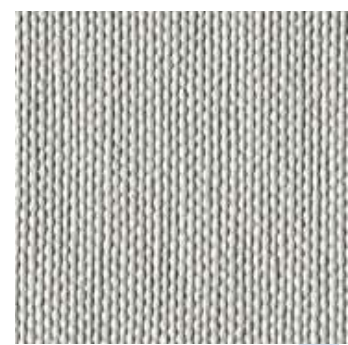
122-2102  
CORAL



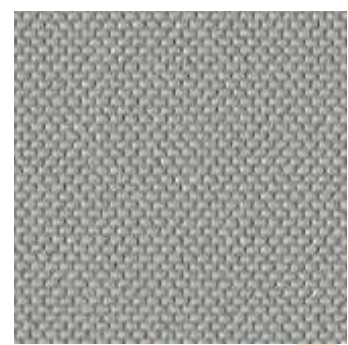
122-2318  
WINDY



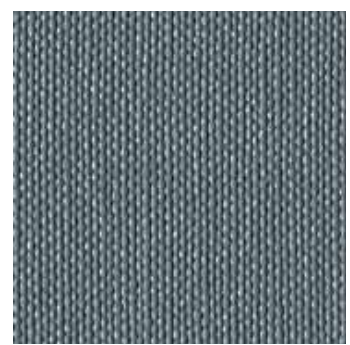
122-5039  
SMOG



122-2101  
ALUMINIUM



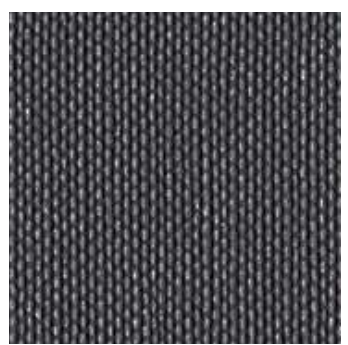
122-4001  
PLATA



122-2094  
PETROL



122-4002  
STORM



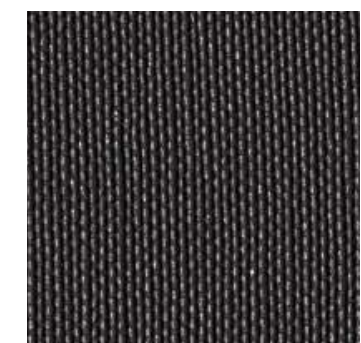
122-4010  
TITANIUM



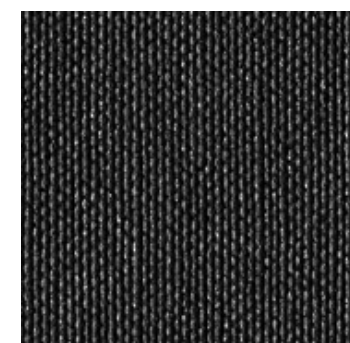
122-4011  
STERLING



122-4003  
GRAPHITE



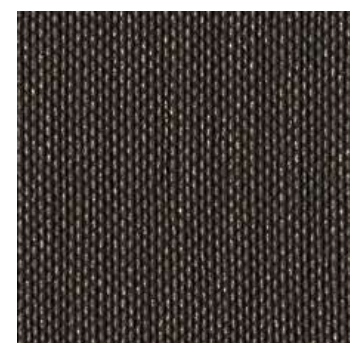
122-9002  
CARBON



122-9001  
BLACK



122-0005  
MOCCA



122-4024  
METEOR

# Technical data sheet

Composition:	Topcoat: Vinyl
Backing:	Backing 100% Polyester Hi-Loft 2™
Weight:	683 gr/m <sup>2</sup>
Width:	min. 137cm
Roll size:	+/- 30m*
Abrasion:	> 300.000 cycles (MARTINDALE)
Cold Crack:	-29° C
UV-Resistance:	ISO 105 B02: ≥7/8 (Blue Wool Scale) ISO 105 B04: ≥4/5 (Grey Scale)

\* Typical roll length. Length may vary depending on the availability of standard roll size

Flame Retardancy**:	EU	EN 1021 Part 1 & 2	FR	NF P 92-503 / M2
	EU	ECE R 118.02 Anx. 6, 7 & 8	AT	ÖNORM B 3825, Gruppe I
	EU	IMO 2010FTP Part 8	AT	ÖNORM A 3800 Teil I
	EU	EN 71-2:2006+AI:2007 Safety of Toys - part2.	US	FMVSS302
	DE	DIN 4102 B2	US	CAL TB 117-2013, Sec. E
	IT	UNI 9175 Classe I.IM	US	FAR 25/853

Other characteristics	EU	(MED) Marine Equipment Directive
	UK	UKCA

\*\* This term and any corresponding data refer to the typical performance in the specific tests indicated and should not be construed to imply the behaviour of this or any other material under actual conditions.

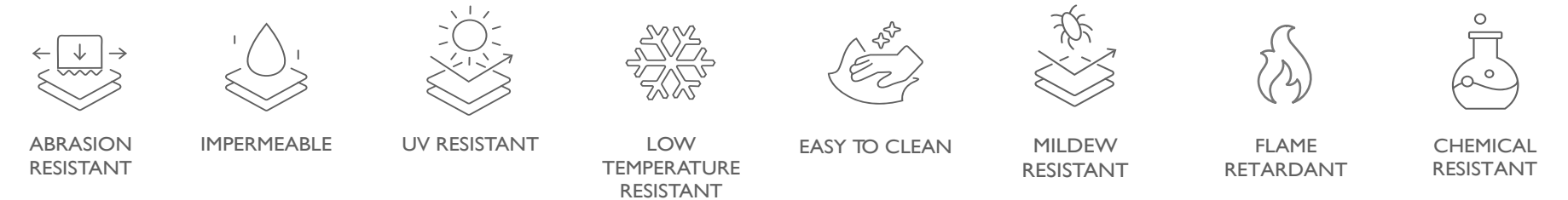
## FINISHES AND TREATMENTS **PERMABLOK<sup>3</sup>** ADVANCED PROTECTION

Virucidal Activity:	ISO 18184:2019
	ISO 21702:2019
Bacteriostatic Properties:	ISO 22196:2011.
	Value of antibacterial*** activity R>2.

\*\*\* Testing was conducted with material exposed to *Staphylococcus aureus*, *Staphylococcus aureus* (MRSA), *Escherichia coli* and *Klebsiella pneumoniae*.

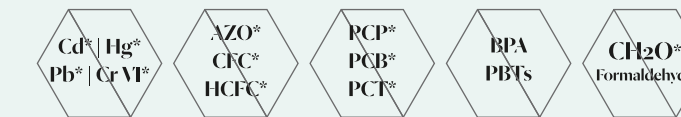
**WARRANTY** 5 Years. Terms and Conditions apply.

PERMABLOK<sup>3</sup> and SPRADLING<sup>®</sup>, are registered trademarks of Spradling Holdings, Inc<sup>®</sup>.



## SUSTAINABLE PRODUCT PROFILE

### Heavy Metals Free



\*In accordance with REACH, RoHs and ECHA regulations

- AZO = Azo dyes
- CFC = Chlorofluorocarbons
- HCFC = Hydrochlorofluorocarbons
- BPA = Bisphenol A
- PBTs = Persistent Bio accumulative and Toxic Chemicals
- PCP = Pentachlorinated Biphenyl
- PCB = Pentachlorinated Biphenyl
- PCT = Polychlorinated Terphenyls

### Certifications



### Sustainable manufacturing certifications



### Compliances

